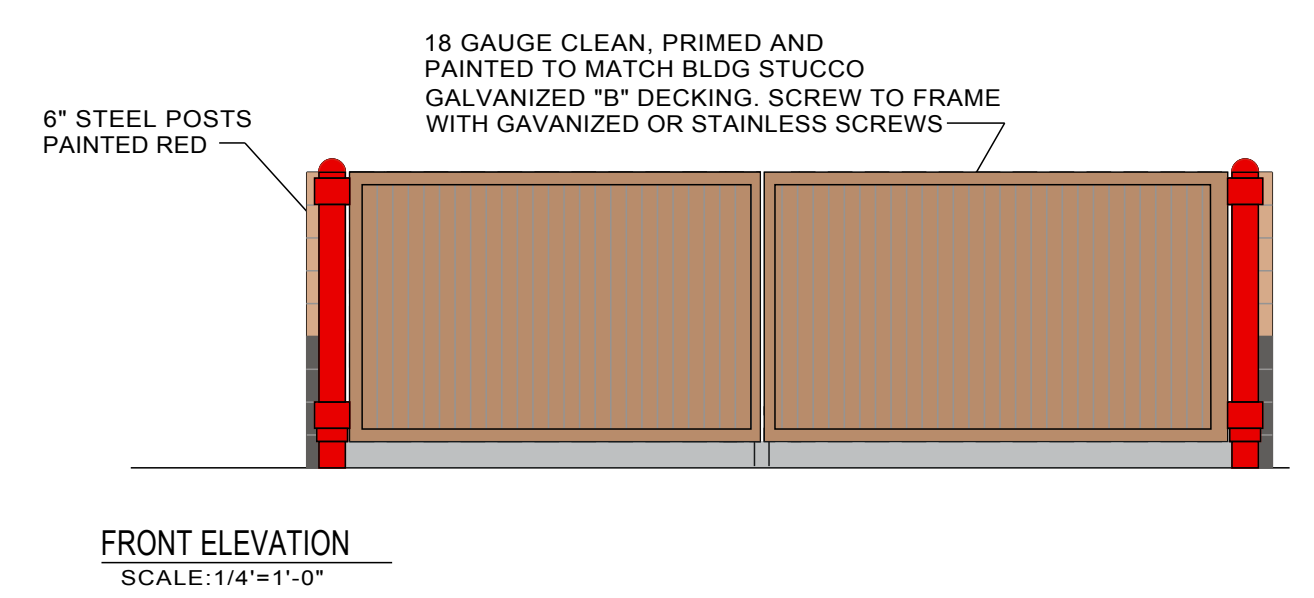
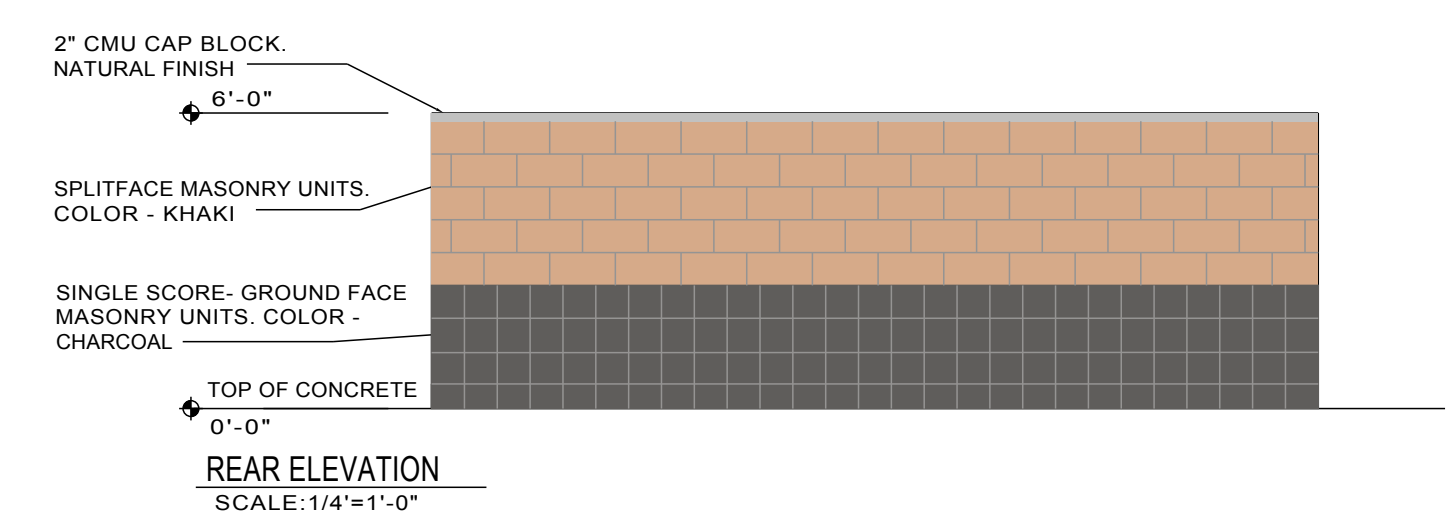
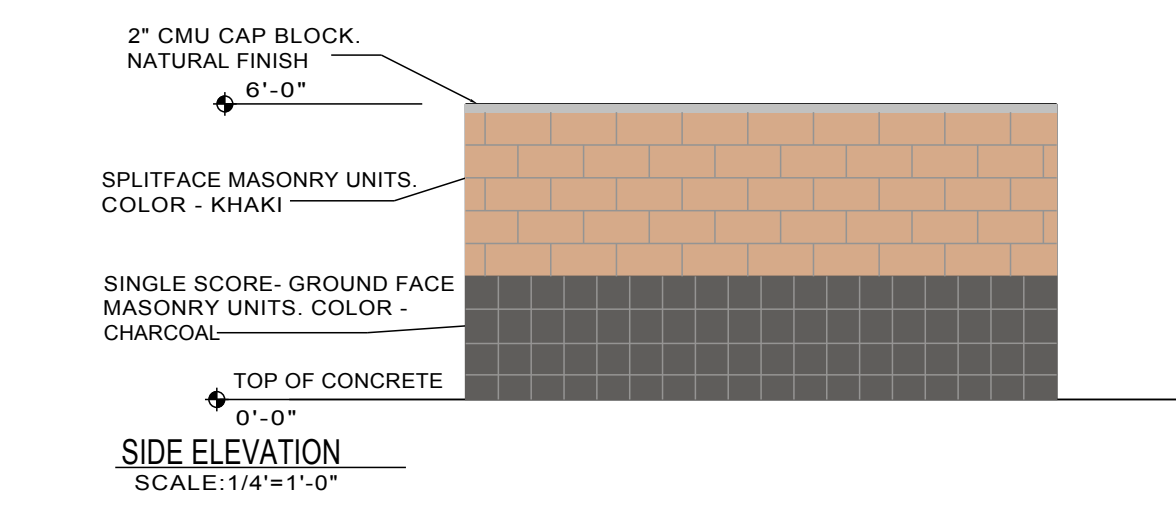


- 1 COPING- COLOR: WHITE
- 2 NOT USED
- 3 SPLITFACE MASONRY UNITS. COLOR - KHAKI
- 4 ALUMINUM STOREFRONT - RED KYNAR FINISH WITH 1/4" BLACK OPAQUE GLAZING
- 5 SINGLE SCORE- GROUND FACE MASONRY UNITS. COLOR - CHARCOAL
- 6 E.I.F.S. COLOR: DRYVIT CANVAS 443A
- 7 E.I.F.S. CORNICE COLOR: WHITE
- 8 NOT USED
- 9 ALUMINUM STOREFRONT - RED KYNAR FINISH CLEAR GLASS WINDOWS
- 10 ALUMINUM DOORS - CLEAR ANODIZED FINISH
- 11 PAINT MAN DOOR & METAL FRAMES DRYVIT TAMALE 382
- 12 PAINT LOADING DOOR AND METAL FRAMES DRYVIT TAMALE 382
- 13 NOT USED
- 14 38" SQUARE FIXED WINDOWS COLOR WHITE WITH 1/4" BLACK OPAQUE GLAZING
- 15 1" WIDE SCORED JOINT (TYP.)
- 16 WALL PAK LIGHT FIXTURE
- 17 EXPANSION JOINT
- 18 TOILET WALL VENTS PAINT TO MATCH WALL
- 19 NOT USED
- 20 FRONT WALL SIGN - 24" HIGH CHANNEL LETTERS
- 21 WALL SIGN - 24" HIGH CHANNEL LETTERS
- 22 STORE ADDRESS - 6" WHITE REFLECTIVE NUMBERS
- 23 NOT USED
- 24 METAL AWNING - PAINT SW6083
- 25 METAL TRELLIS - PAINT SW6083
- 26 SPLITFACE MASONRY UNITS. COLOR - COCOA

2 ELEVATION KEYNOTES



REVISIONS		
NO.	DATE	DESCRIPTION
1	REV1	
2	REV2	
3	REV3	
4	REV4	
5	REV5	
6	REV6	

AutoZone Store No. 4197
132ND STREET
MILLCREEK WA 98208

Architect:
123 South Front Street
Memphis, Tennessee 38103
TEL: (901) 495-8969
FAX: (901) 495-8969

04-07-15
57N-L