

# New Retail/Restaurant Space Available Humble, Texas



**9663 Farm to Market 1960 Bypass  
Humble, Texas 77338**

## PROPERTY HIGHLIGHTS

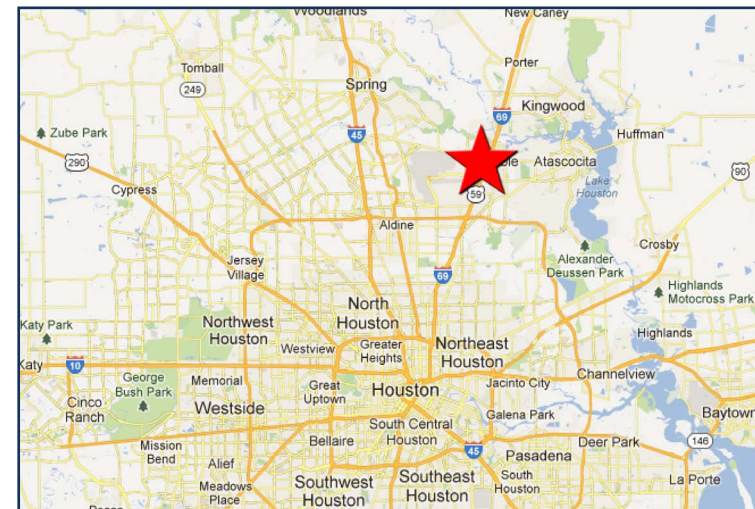
- 3.6625 Total Acres
- Anchored by Sam's Club and adjacent to Kroger & Walmart
- Surrounded by national retailers
- Easy access and excellent visibility
- Highly desirable location near Deerbrook Mall

## DEMOGRAPHICS

Radius	Total Population	Daytime Population	Average Household Income
1-mile	6,919	16,876	\$62,819
3-mile	39,552	50,222	\$64,445
5-mile	113,792	125,649	\$77,461

## TRAFFIC COUNTS

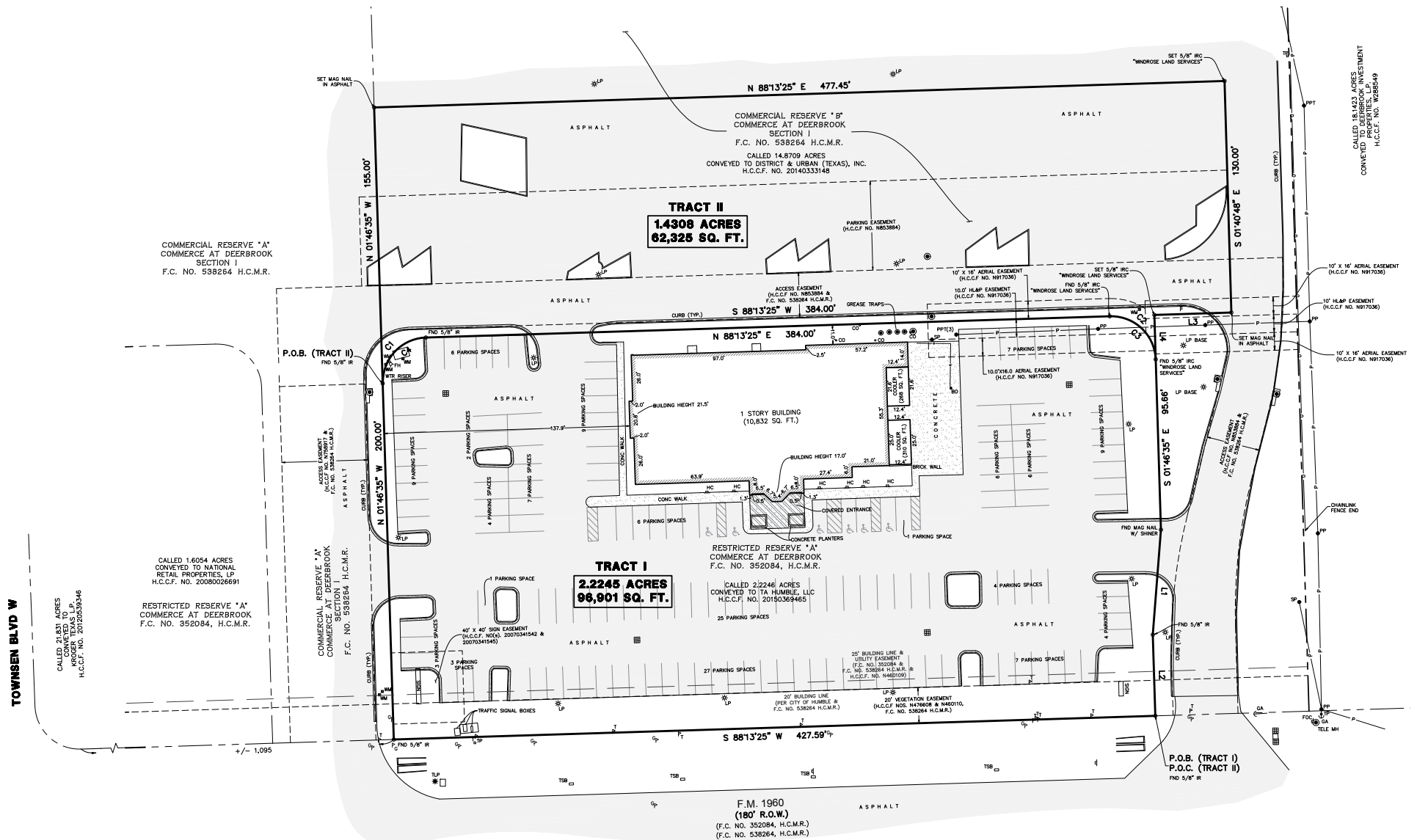
FM 1960	I-69/US 59
42,157 VPD ('13)	136,517 VPD ('13)



[illegible]



## SURVEY





# New Retail/Restaurant Space Available Humble, Texas

